

PLATE 1: Urban Growth Boundary

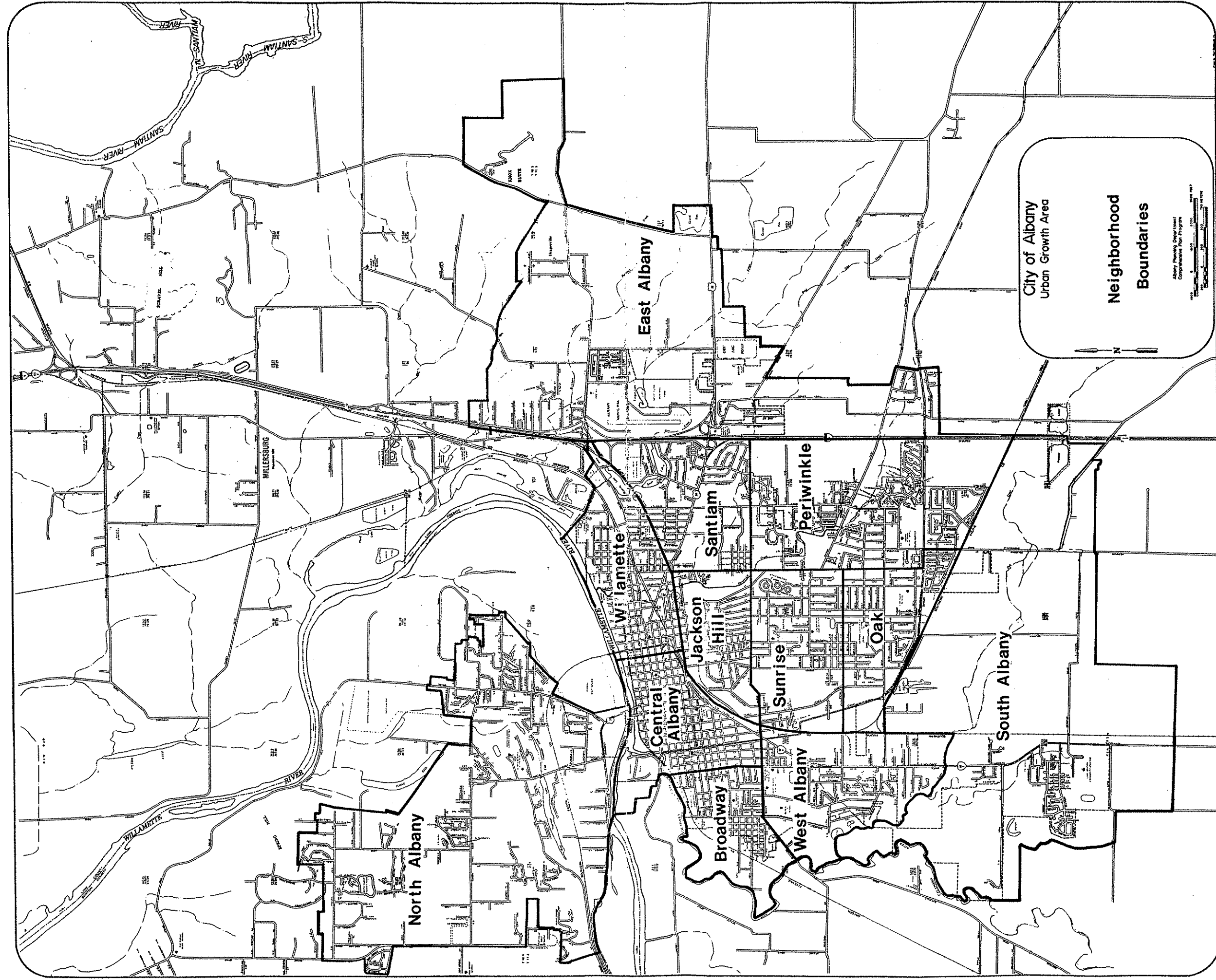


PLATE 2: Neighborhood Boundaries

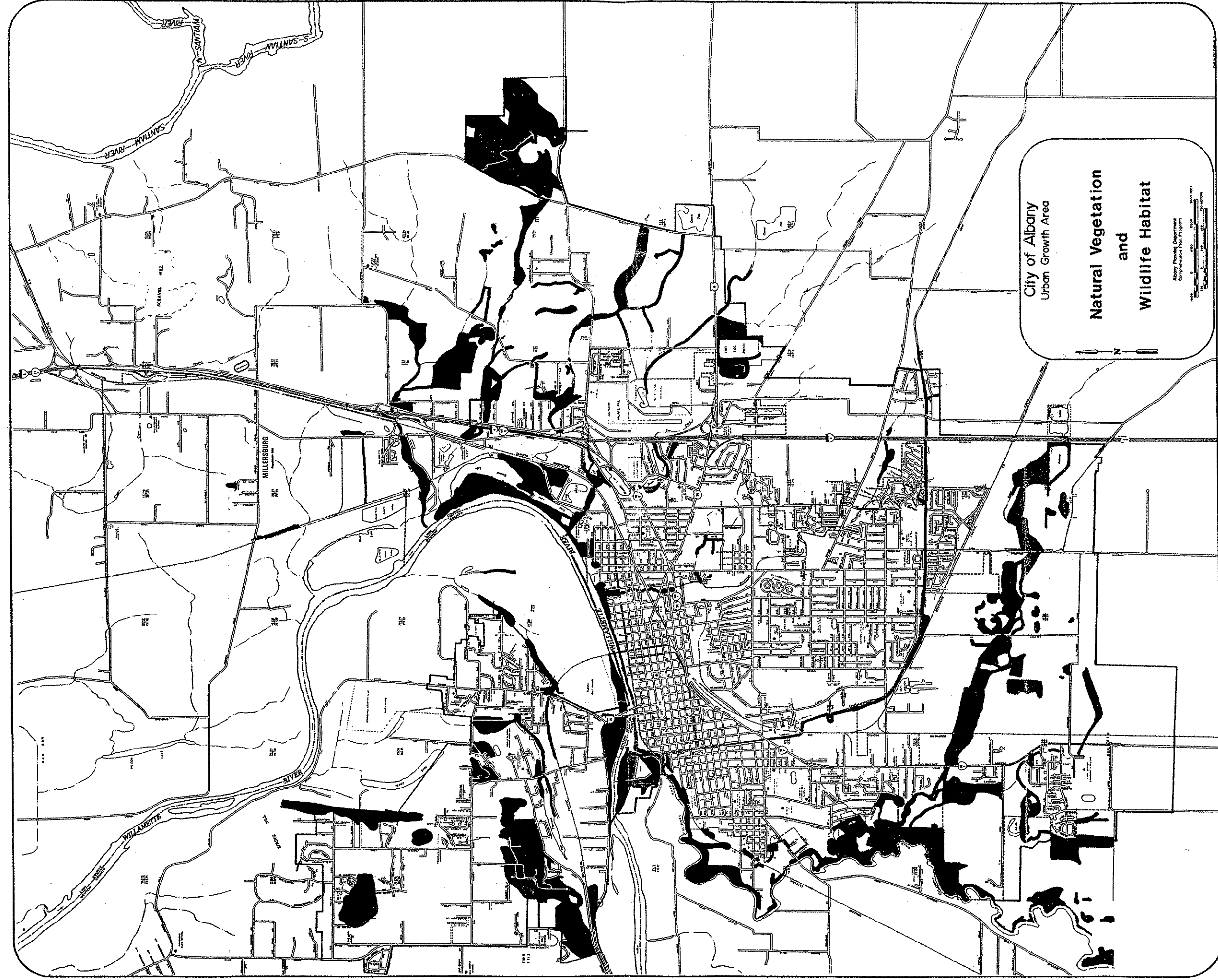


PLATE 3: Natural Vegetation and Wildlife Habitat

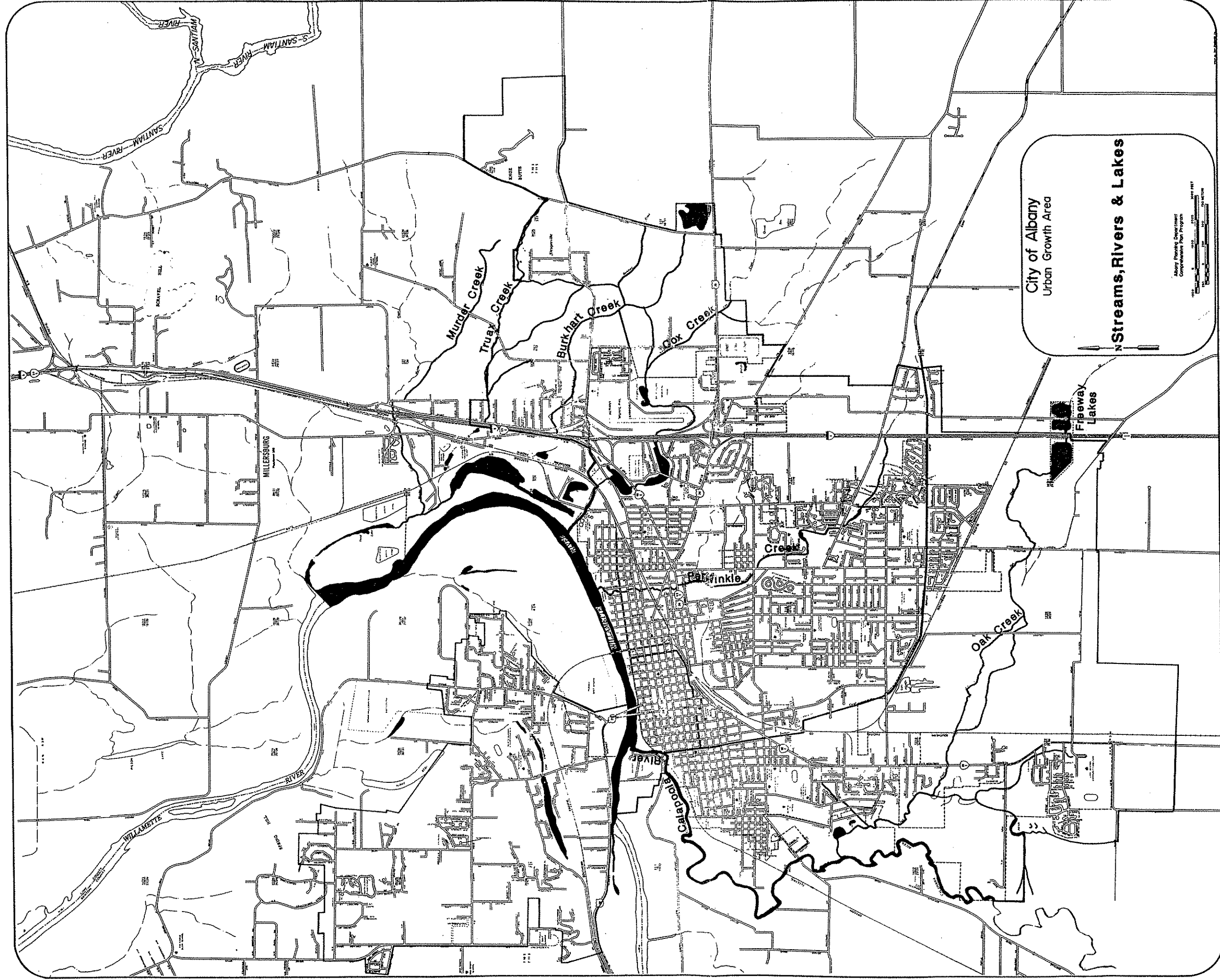
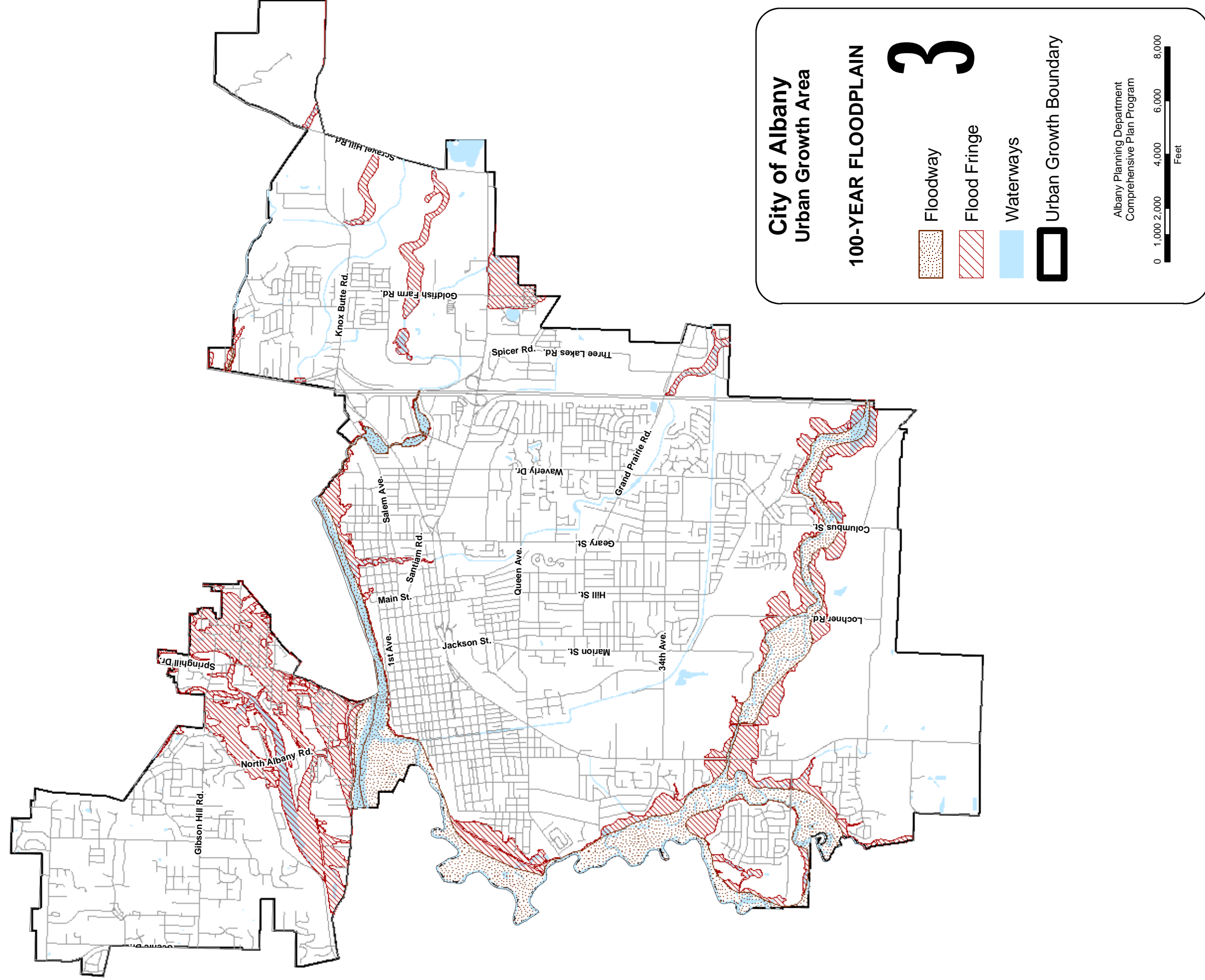
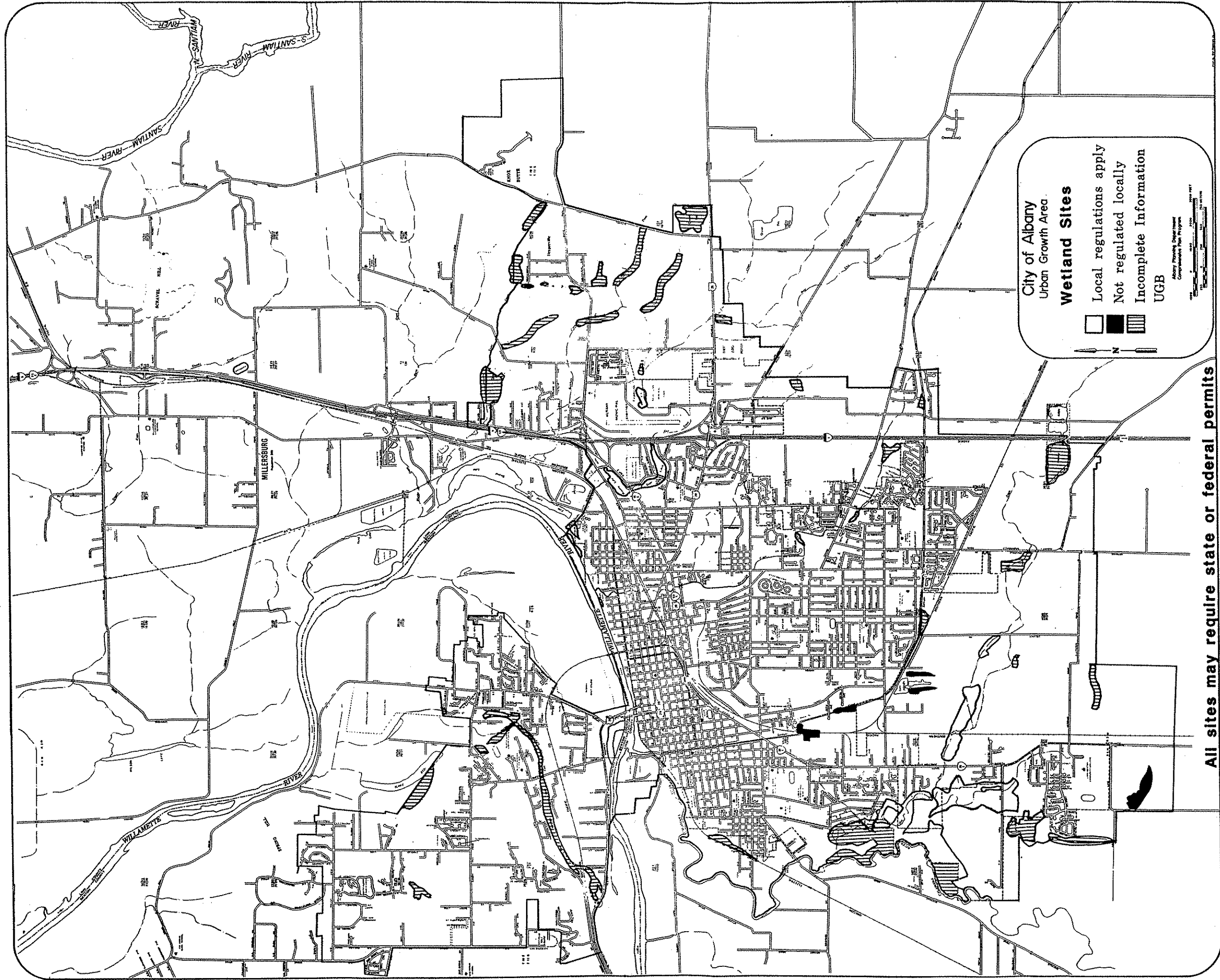


PLATE 4: Streams, Rivers and Lakes



NOTE: Letters of Map Change (LOMRs and LOMAs) from FEMA supersede the floodplain boundaries shown on this map.

PLATE 5: 100-Year Floodplain
ORD 5746 (September 29, 2010)



All sites may require state or federal permits

PLATE 6: Wetland Sites

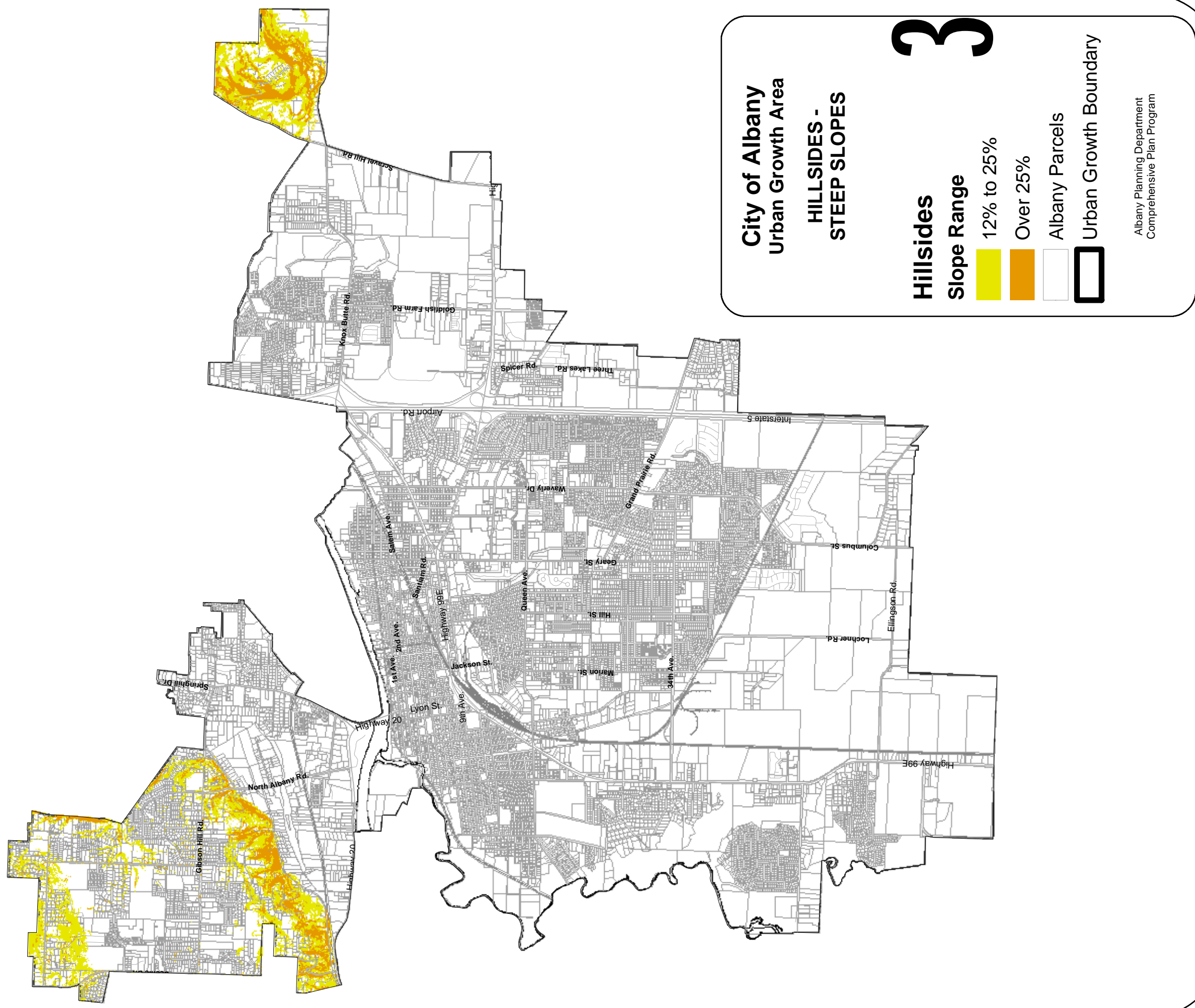


PLATE 7: Hillsides - Steep Slopes
ORD 5673 (June 27, 2007)

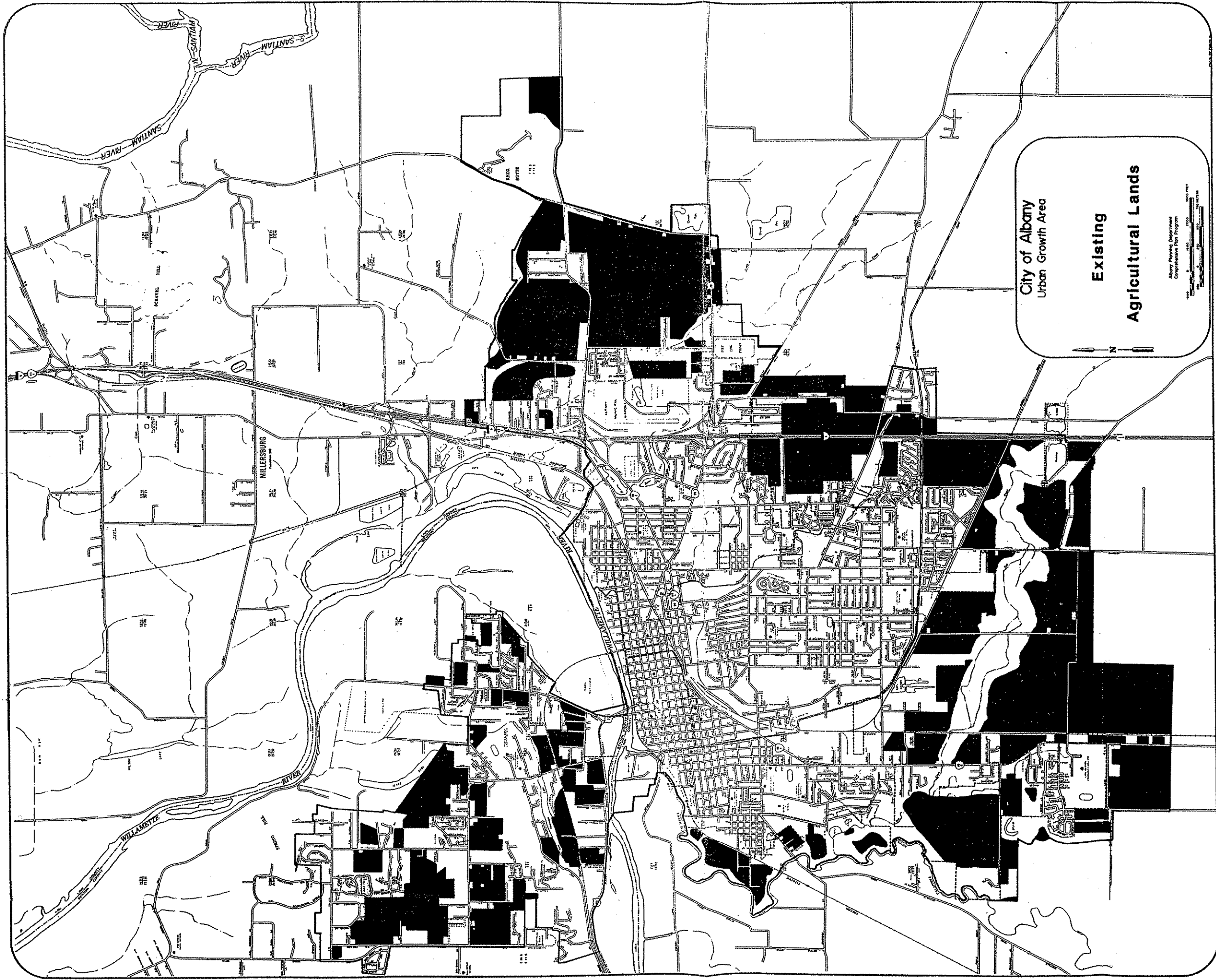


PLATE 8: Existing Agricultural Lands

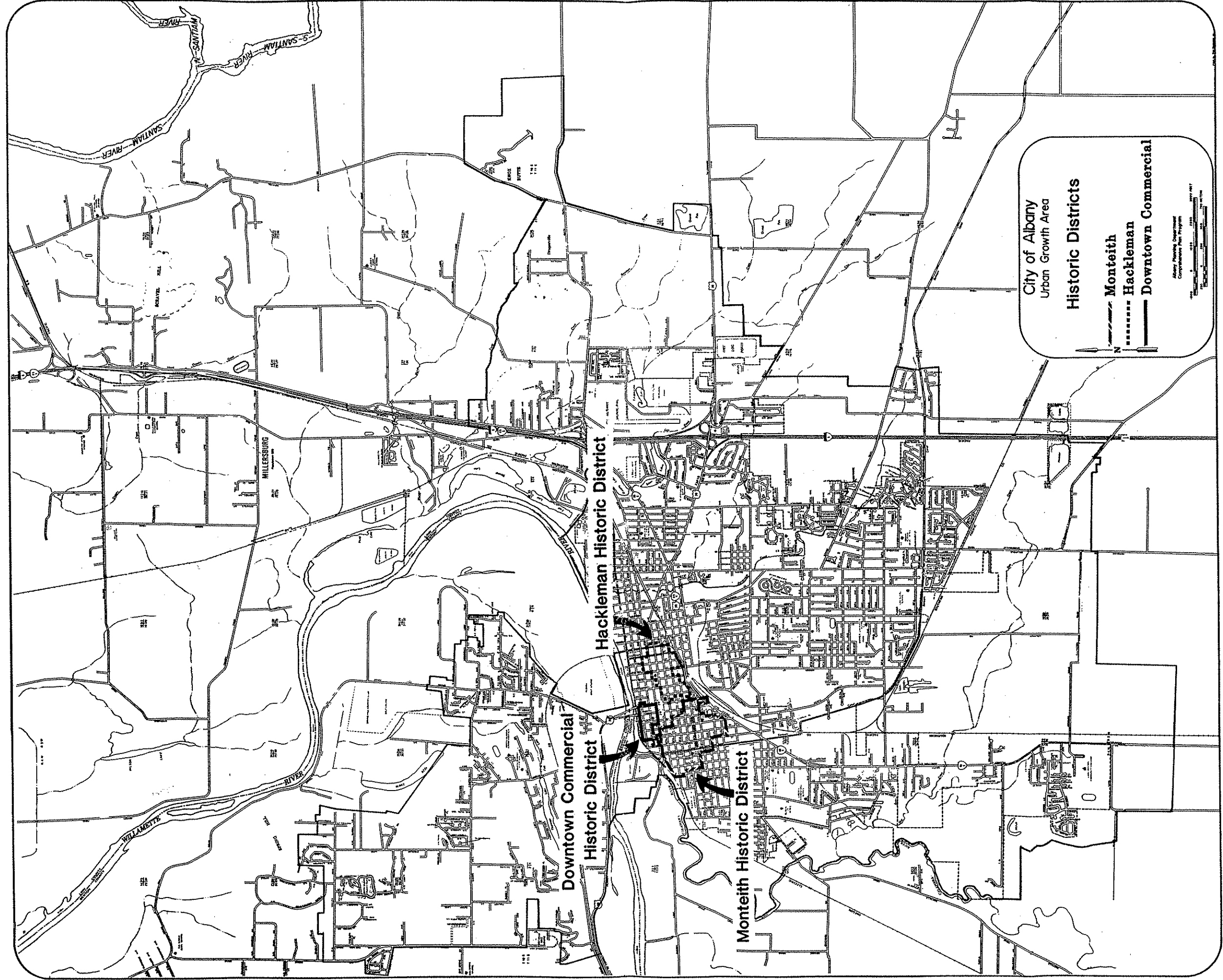


PLATE 9: Historic Districts

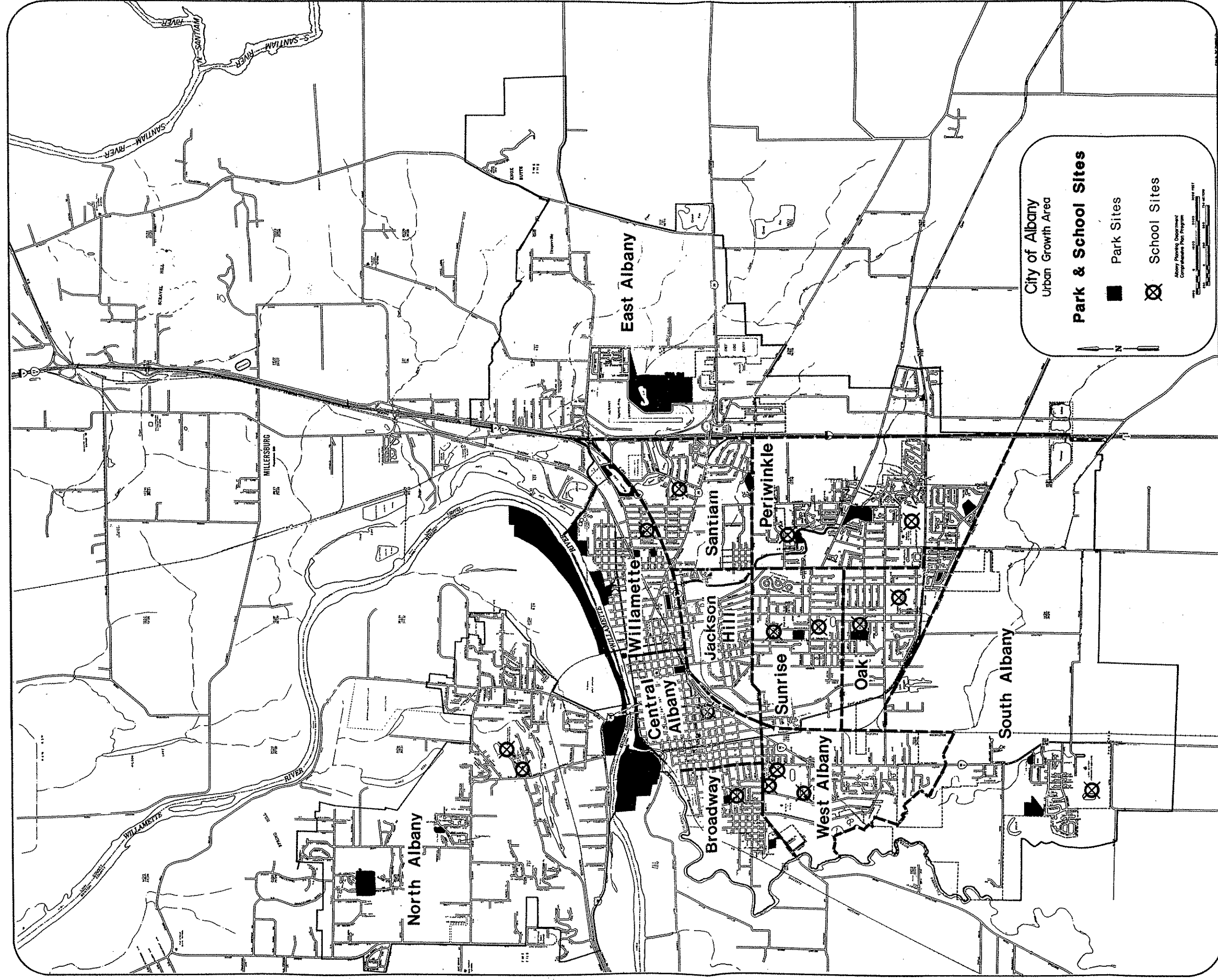


PLATE 10: Park and School Sites

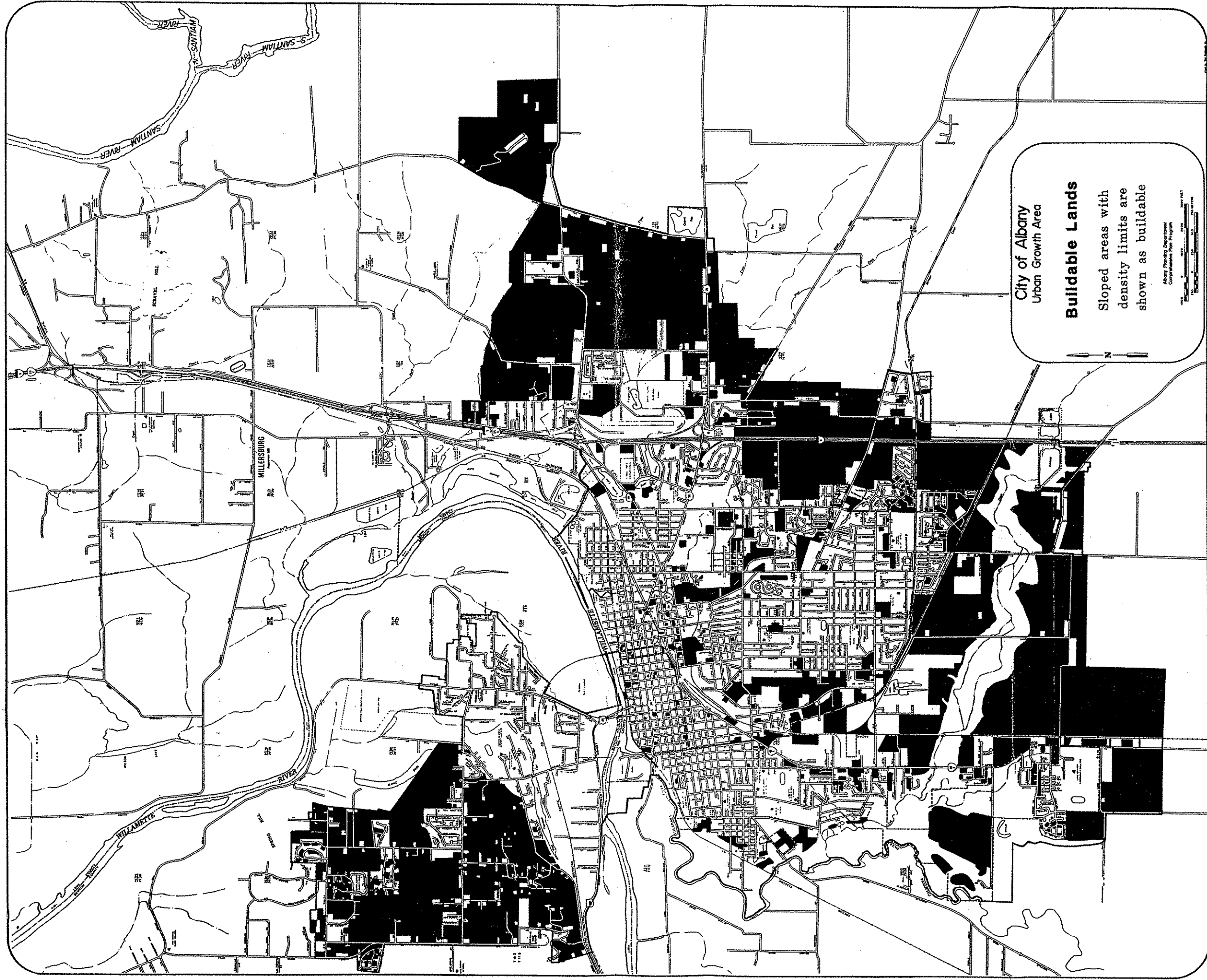


PLATE 11: Buildable Lands

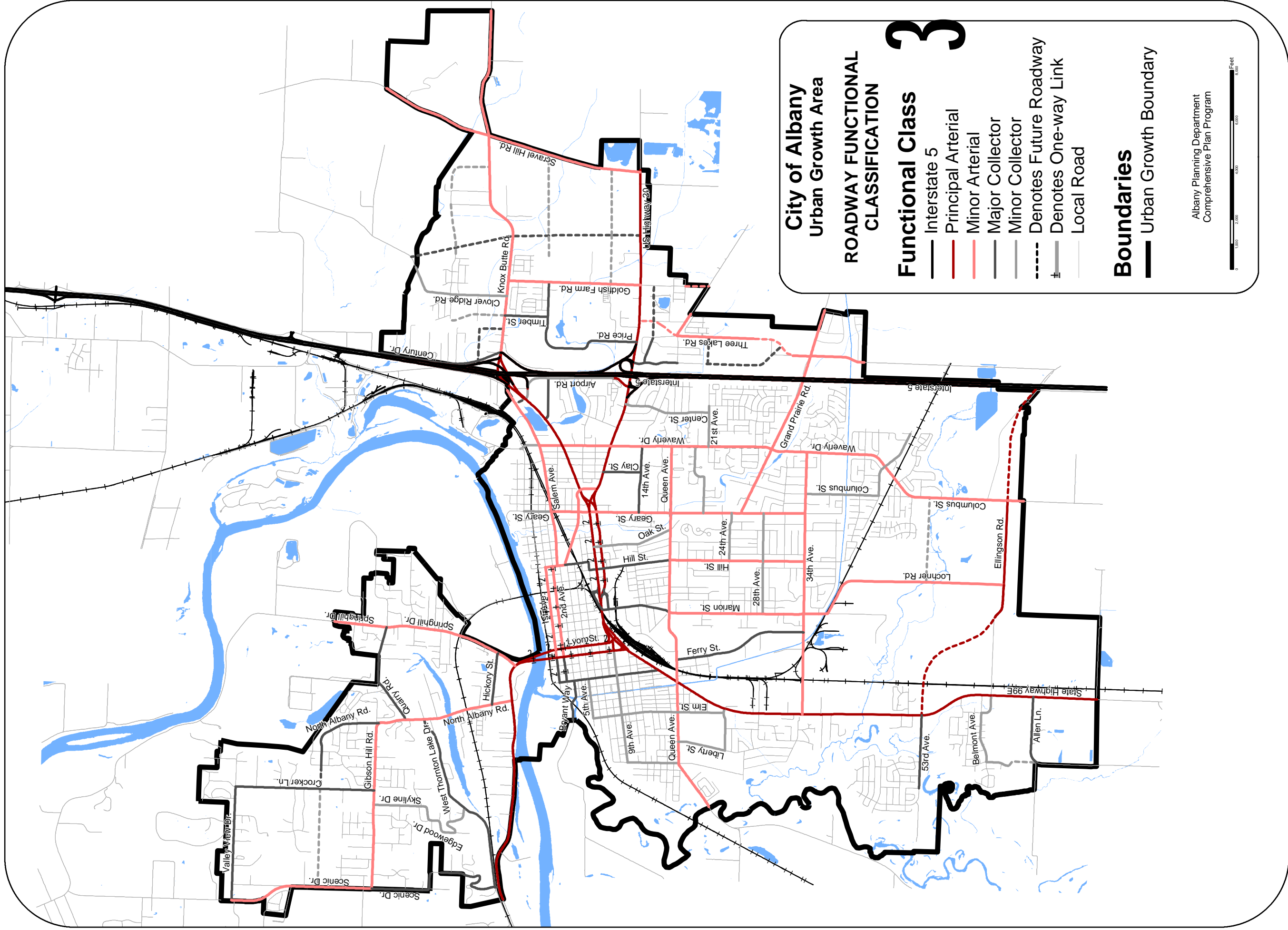


Plate 12: Roadway Functional Classification
ORD 5729 (February 24, 2010)

PLATE 13: Has been removed per Ordinance 5729, dated February 24, 2010.

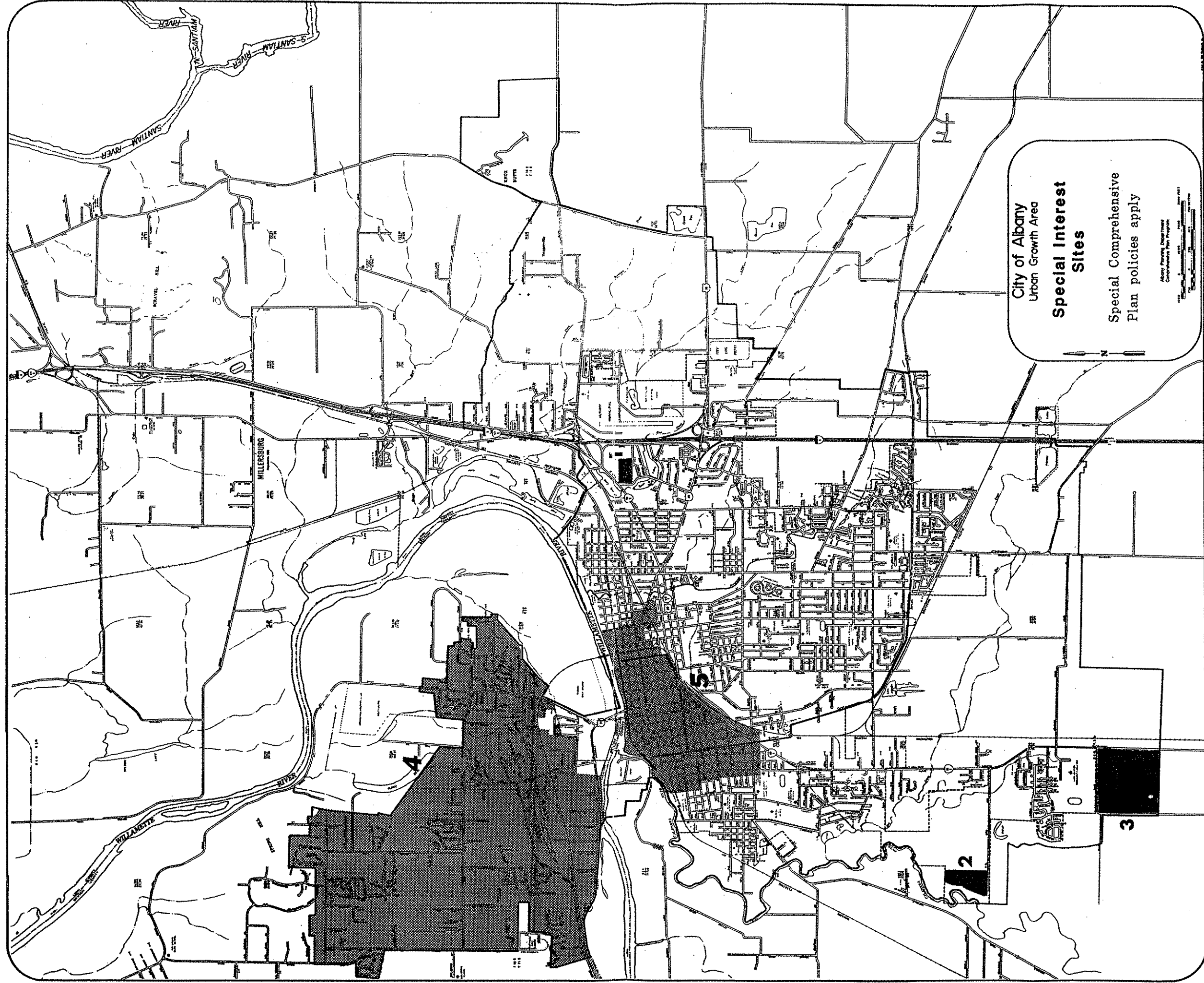


PLATE 15: Special Interest Sites